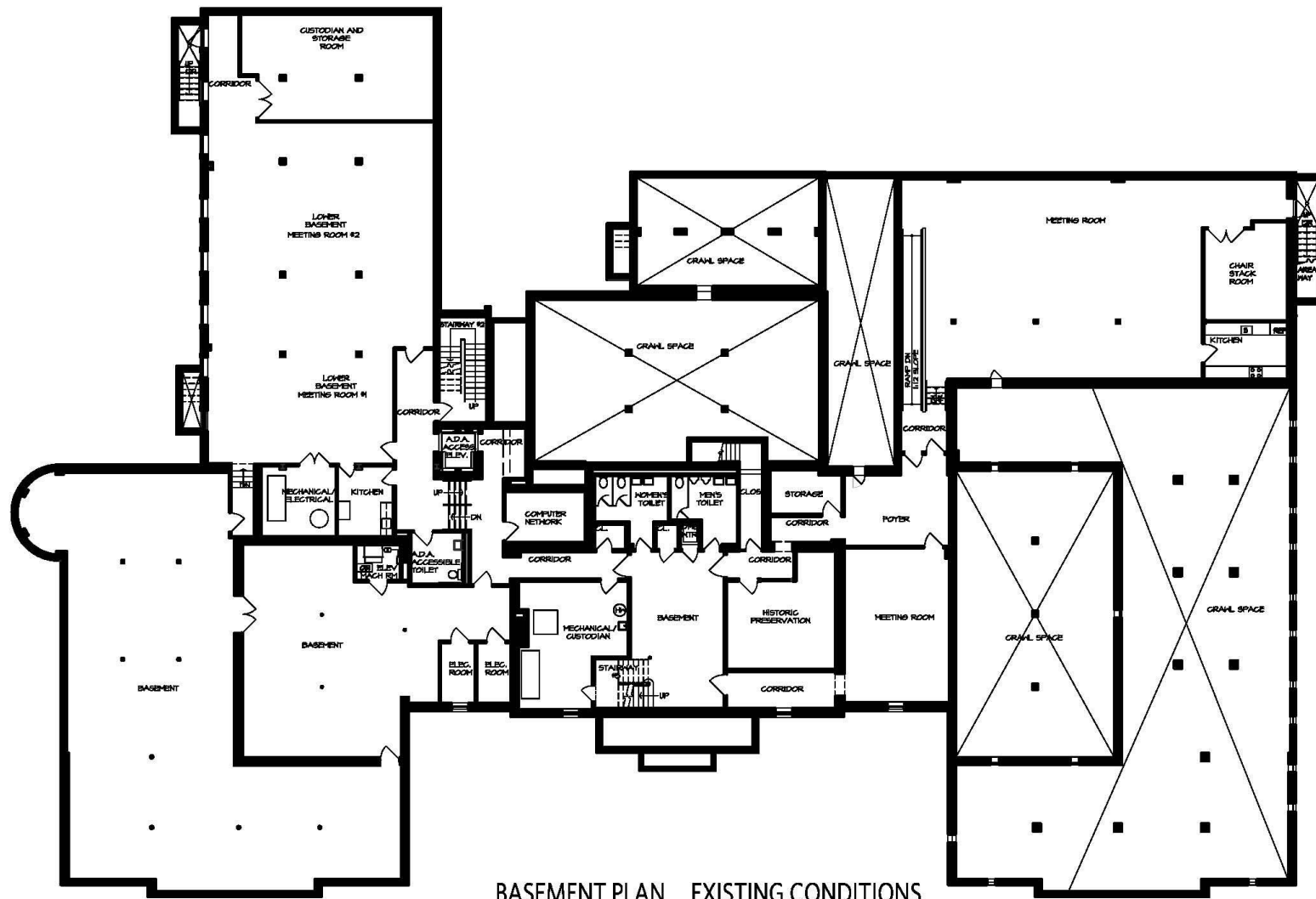


FIRST FLOOR PLAN EXISTING CONDITIONS

JULY 21, 2015

LIBRARY OF THE CHATHAMS
CHATHAM, NEW JERSEY

HMRARCHITECTS
FIFTY YEARS



BASEMENT PLAN EXISTING CONDITIONS

LIBRARY OF THE CHATHAMS
CHATHAM, NEW JERSEY

JULY 21, 2015

HMRARCHITECTS
FIFTY YEARS

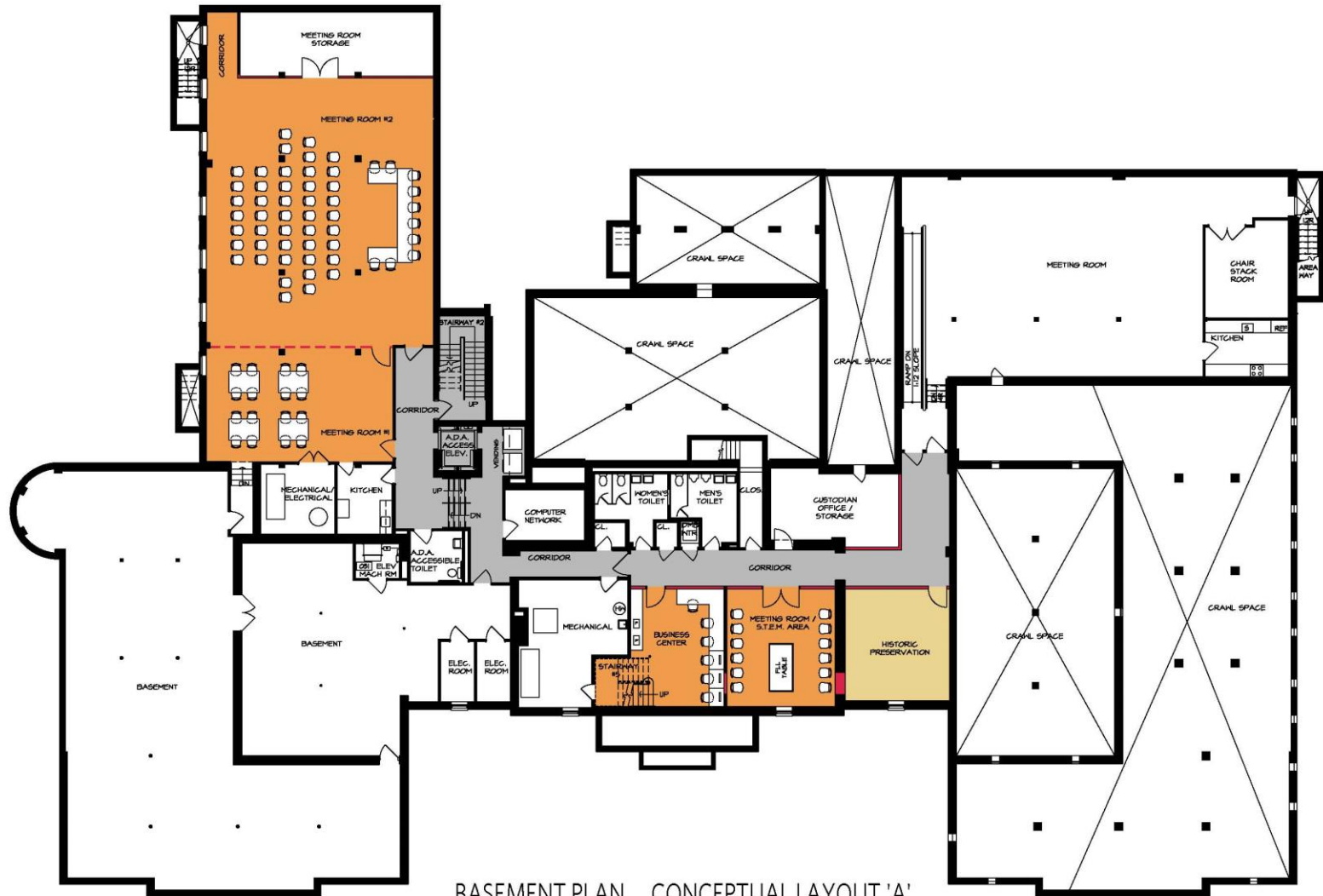


FIRST FLOOR PLAN CONCEPTUAL LAYOUT -A1-

LIBRARY OF THE CHATHAMS
CHATHAM, NEW JERSEY

HMRARCHITECTS
FIFTY YEARS

AUGUST 7, 2015



BASEMENT PLAN CONCEPTUAL LAYOUT 'A'

WALL KEY

— EXISTING WALL TO REMAIN

— NEW WALL

COLOR KEY

TEEN CENTER

CHILDRENS AREA

ADMINISTRATION

REFERENCE AREA

MEETING/STUDY SPACE

A/V

GENERAL CIRCULATION & COLLECTION

Advantages

- Enclosed Collaborative Teen Space
- Enhanced Local History Room
- Added private study rooms
- Business Center
- Combination STEM / Meeting Room
- Improved lines of sight and walkways
- Custodian's storage moved so programs and meetings are not interrupted by maintenance needs
- Community Room larger with clearer lines of sight around structural columns
- A/V in one area instead of across an aisle
- Separate Children's Activity Room
- Children's Librarian will face entrance
- Back entrance improvements
- Energy savings with temperature-controlling vestibules
- Added comfortable seating space
- Elimination of wasted space and unnecessary corridors
- Improved downstairs ventilation

Disadvantages

- Reconfiguring space for books in Children's Room for some net loss (but won't lose books)

Next Steps

feedback@chathamlibrary.org



Board of Trustees Strategic Planning Committee will seek public input.

- Make plans available in library lobby
- Post plans on library website
- January newsletter will invite input from every household in Chatham Borough and Chatham Township.