

A Bronze History: Chatham Borough Monuments, Memorials, Public Art, and Historical Markers

A COMPREHENSIVE REVIEW AND ANALYSIS

COMPLETED BY:

CHRISTOPHER CLEMENT

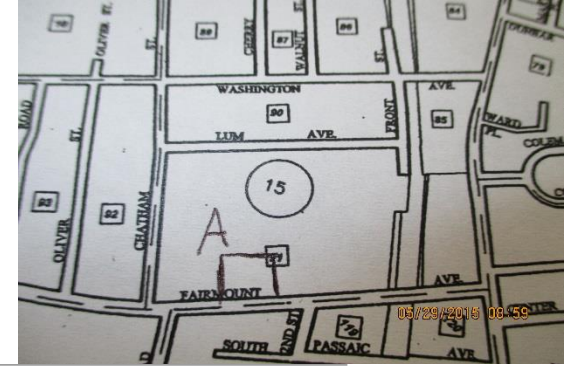
SUMMER INTERN 2015

The Method

- Two photographs were taken of each Item: one of the plaque or any text and another of the item as it fits into the community.
- Each Item was given a rating on the overall condition (Good, Fair, Poor).
- Sites where items can be found were marked on the map with site codes.
- Each item was compiled into a master list for either Memorials or Monuments.

Site Code Key	
Outside Town Hall	A
Reasoner Park	B
Stanley Park	C
Shepard Kollock	D
Liberty Park	E
Chatham Memorial Park, Municipal pool, and Fields	F
Chatham Library; Memorial Park	G
Bicentennial Park	H
Rail Road South	I
Department of Public Works	J
Block 128	K
Washington Avenue School	L
Block 122, Hillside Ave. & Main St.	M
Block 29, Madison Border	N

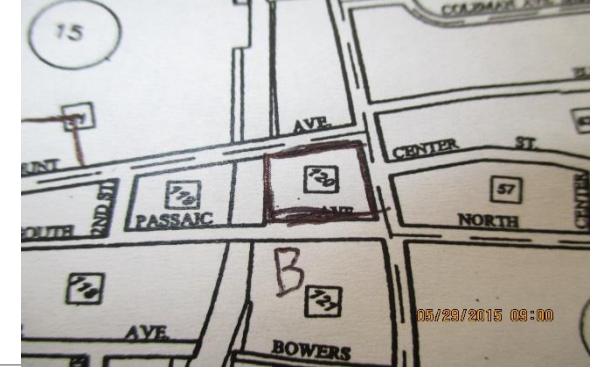
Memorial: Woman's Club of Chatham Tree and Plaque; April 2002



Site Code A: Borough Hall



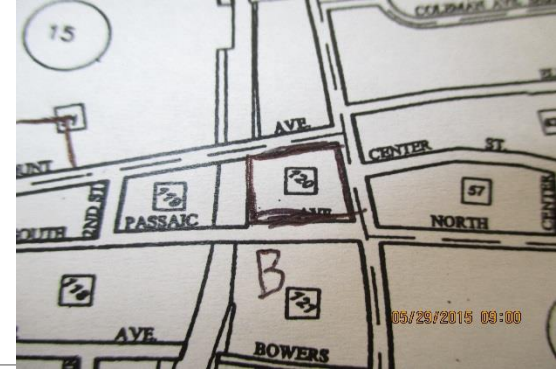
Monument: Chatham Fire Department 9/11 Monument; September 11, 2004



Site Code B: Reasoner Park



Monument: Towne Clock; 1976 (Rededicated June 8th, 2002)



Site Code B: Reasoner Park



Monument: Chatham Community Gazebo; June 14th, 1986



Site Code B: Reasoner Park



Memorial: Mary Shields Emert Memorial Bench



Site Code B: Reasoner Park



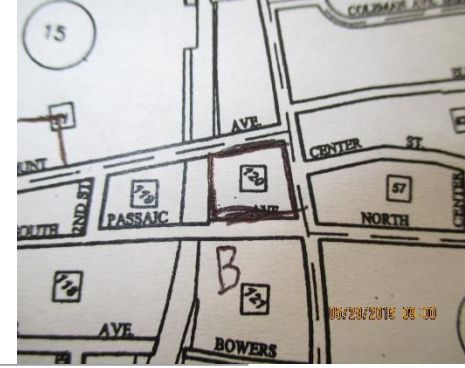
Memorial: Toot Martin Memorial Tree and Plaque; 1989



Site Code B: Reasoner Park



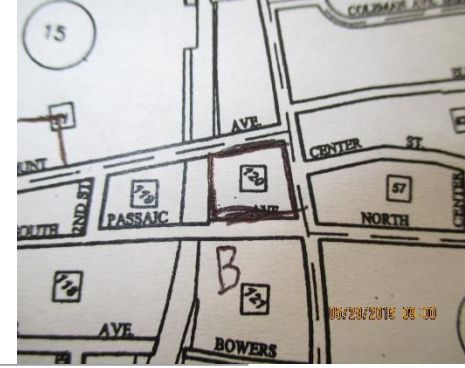
Memorial: Forest H. Smith Memorial Tree and Plaque; 1980



Site Code B: Reasoner Park



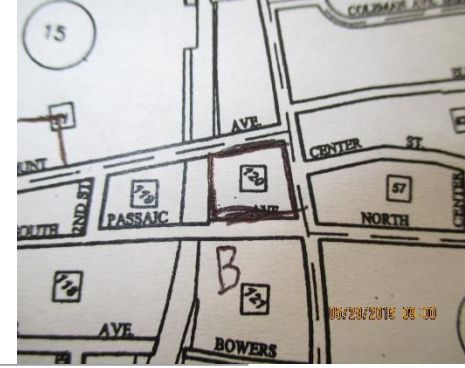
Memorial: William R. Kelley, Jr. Memorial Tree and Plaque



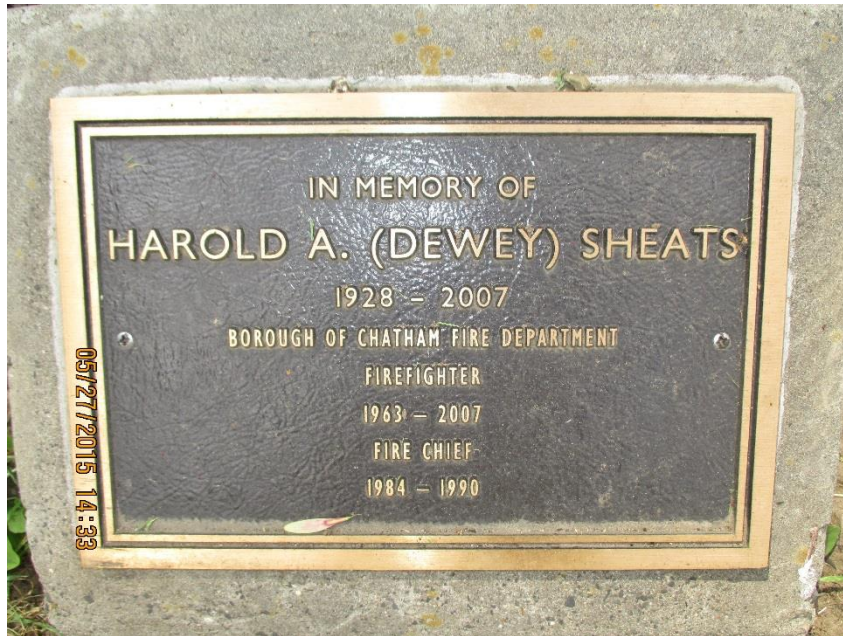
Site Code B: Reasoner Park



Memorial: Harold A. (Dewey) Sheats Memorial Tree and Plaque



Site Code B: Reasoner Park



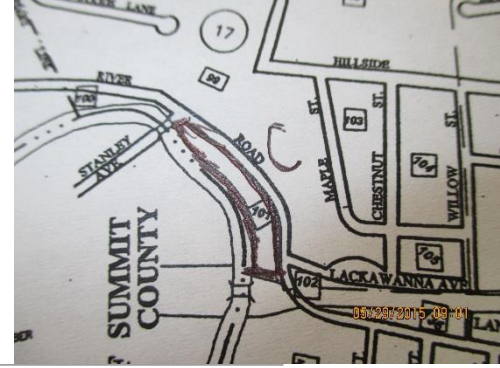
Monument: Doyle M. Butler and Lewis R. Sheats Monument Stone



Site Code B: Reasoner Park



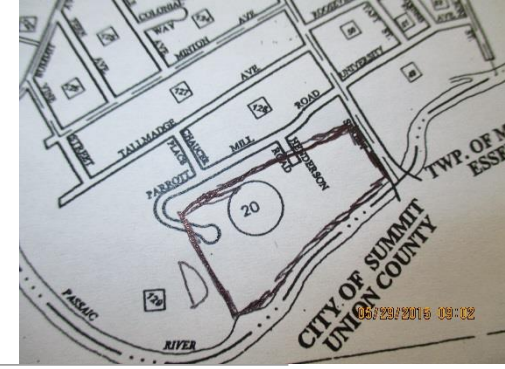
Memorial: Sydney Schlobohm Memorial Bench



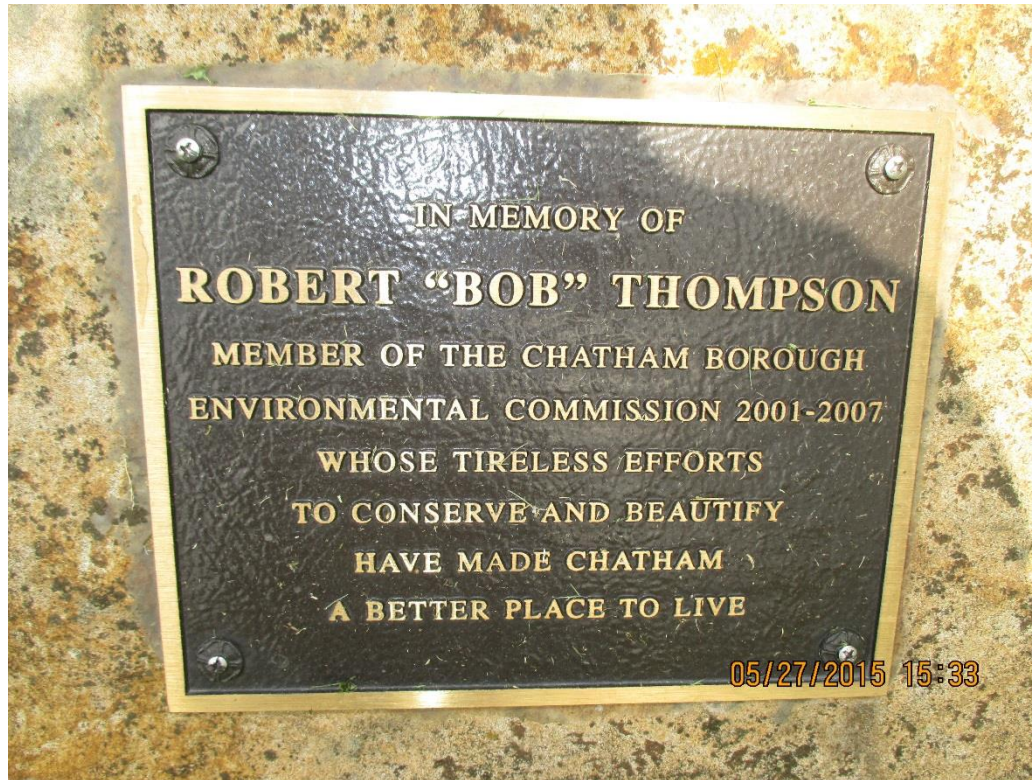
Site Code C: Stanley Park



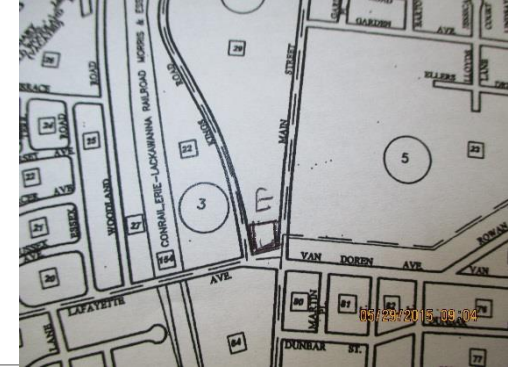
Memorial: Robert “Bob” Thompson Memorial Stone



Site Code D: Shepard Kollock/One Main



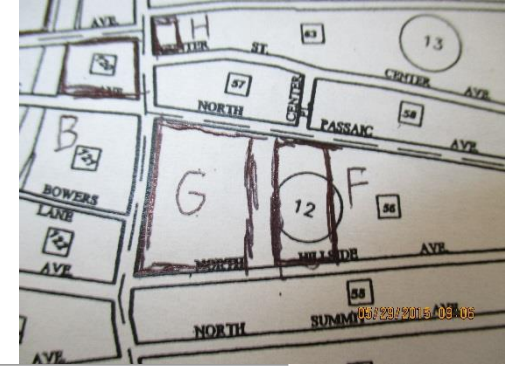
Monument: Liberty Park Red Oak Tree and Plaque; April 17th, 1976



Site Code E: Liberty Park



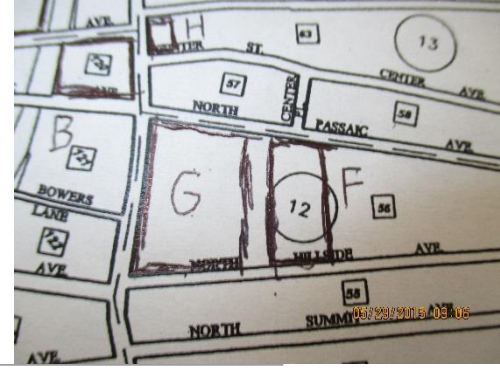
Monument: Chatham Borough Memorial Park, Municipal Pool, and Fields; May 19, 2012



Site Code F: Memorial Park

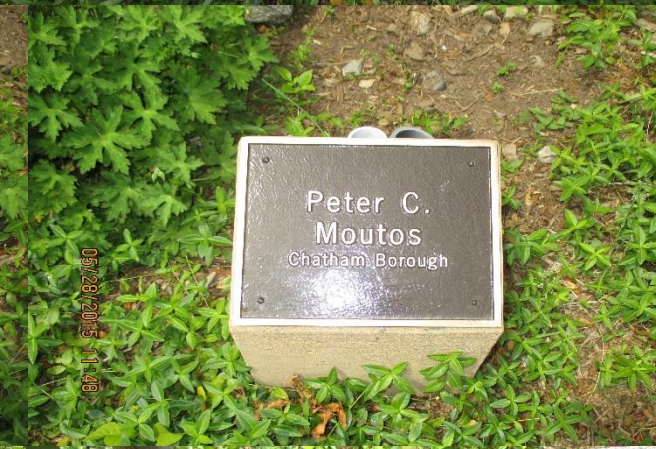
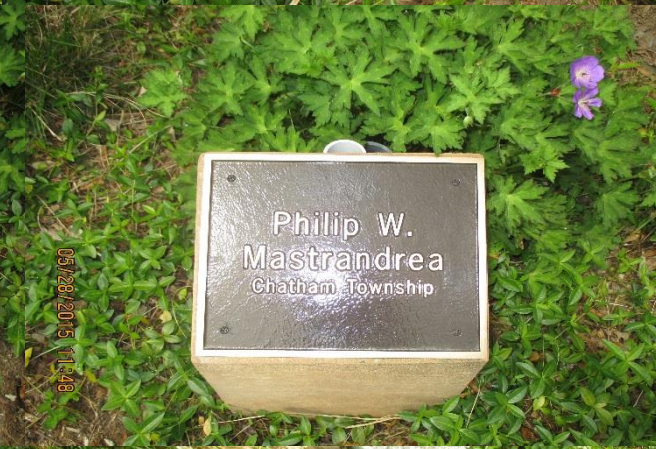


Monument: Chatham 9/11 Monument Sculpture; September 7th, 2008



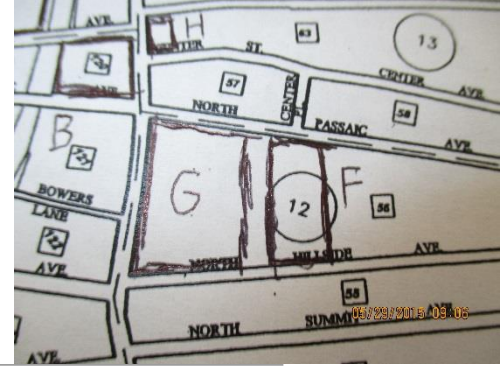
Site Code F: Memorial Park







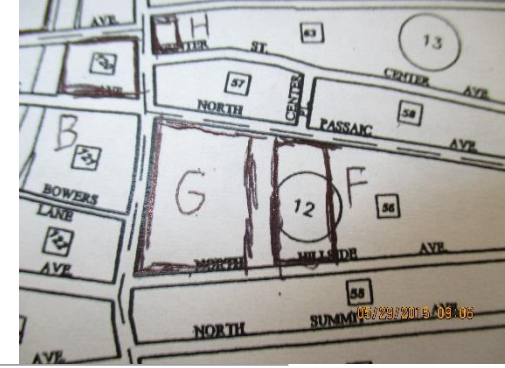
Memorial: Margaret C. Keisler Memorial Tree and Plaque



Site Code G: Library; Memorial Park



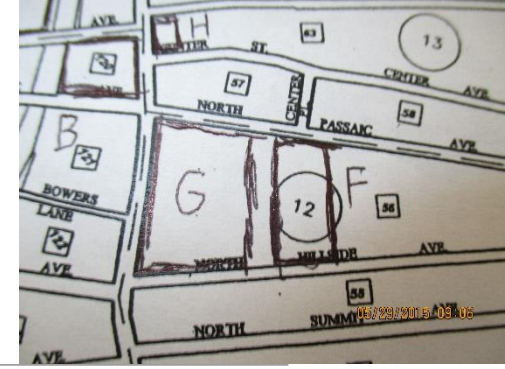
Memorial: Jan Westfall Memorial Stone



Site Code G: Library; Memorial Park



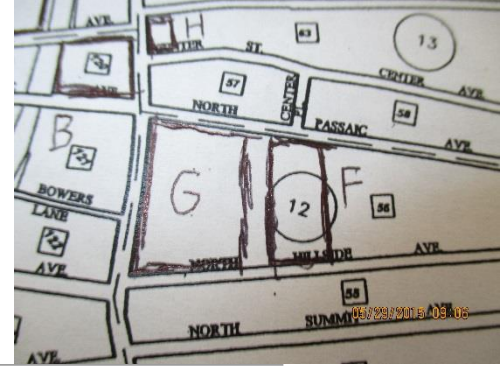
Memorial: Edna VanSickle Budd Memorial Stone



Site Code G: Library; Memorial Park



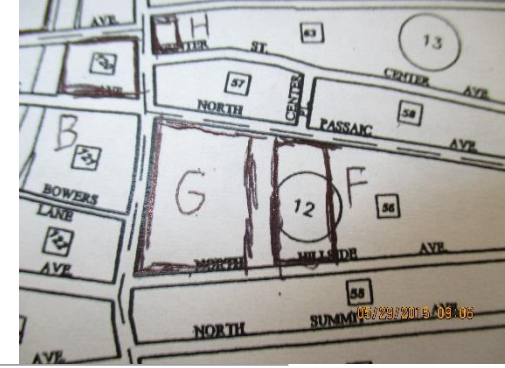
Public Art: Attic Trophy Sculpture



Site Code G: Library; Memorial Park



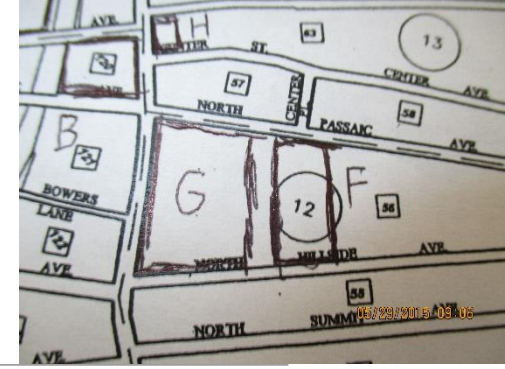
Memorial: The Freedom Tree and Plaque Capt. Robert Jones Memorial; 1973 (Fair Condition)



Site Code G: Library; Memorial Park



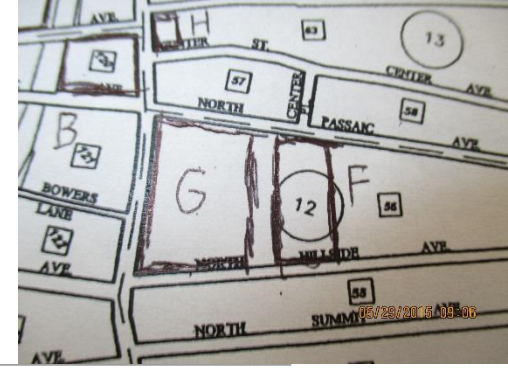
Monument: Memorial Park; Dedicated July 5th, 1920 (Rededicated May 26th, 1997)



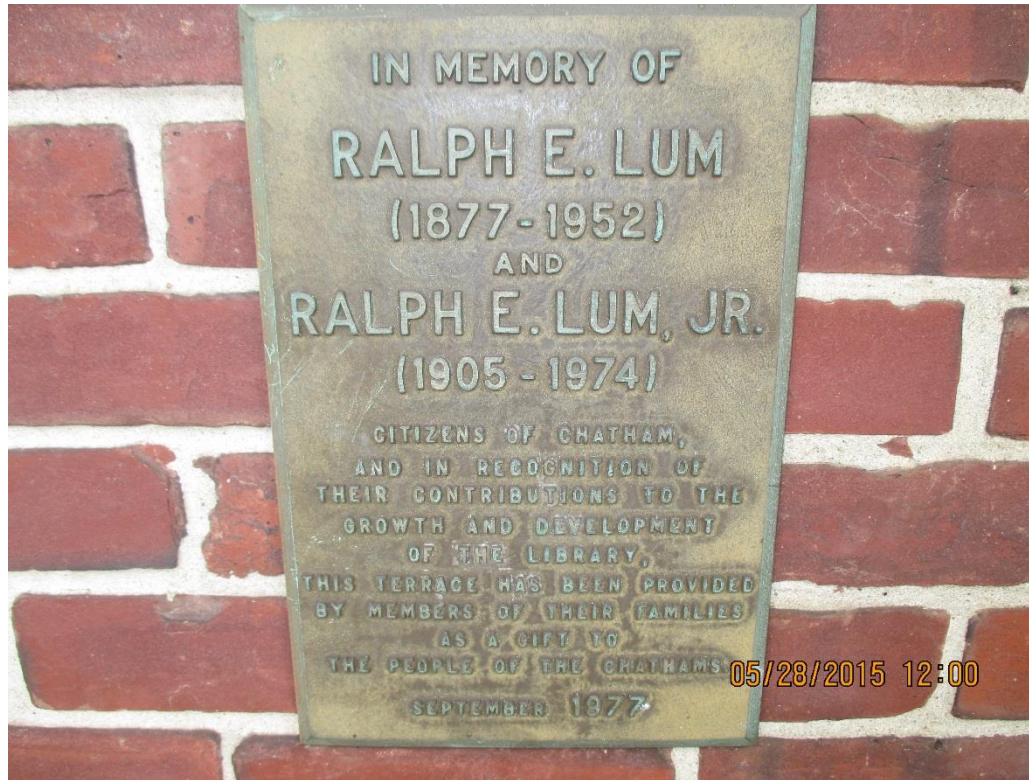
Site Code G: Library; Memorial Fields



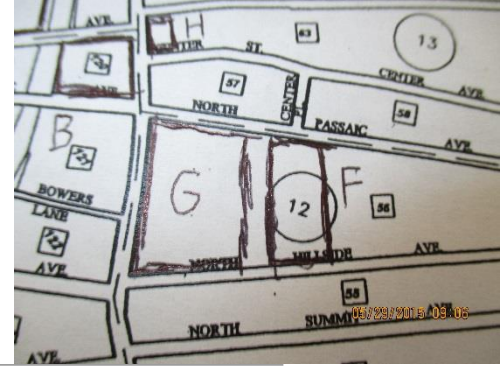
Memorial: Ralph E. Lum and Ralph E. Lum Jr. Memorial Plaque; September 1977 (Fair Condition)



Site Code G: Library; Memorial Park



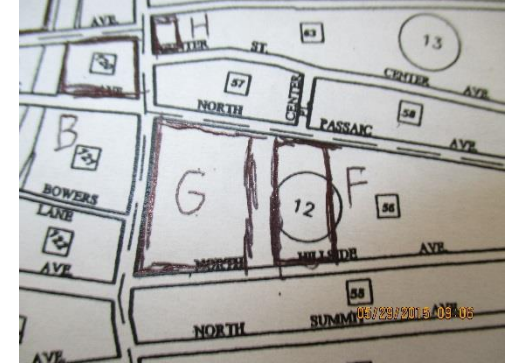
Memorial: Anonymous Donor for Construction of the Library Entrance Plaque; January 1964



Site Code G: Library; Memorial Park



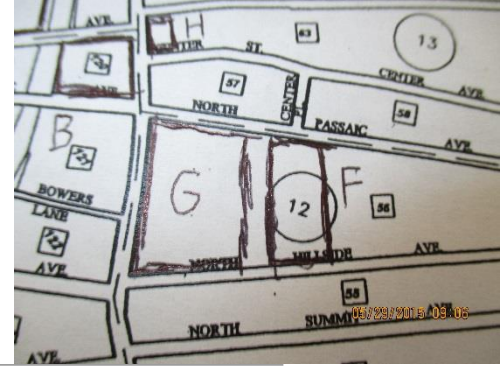
Memorial: “The Children’s Tree” and Plaque in Memory of Marianne Barnes; June 1990



Site Code G: Library; Memorial Park



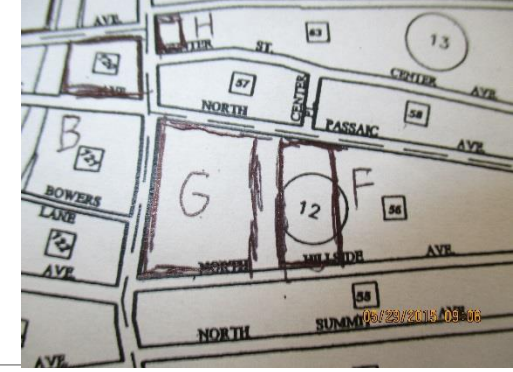
Memorial: Chatham Time Capsule; June 9th, 2007



Site Code G: Library; Memorial Park



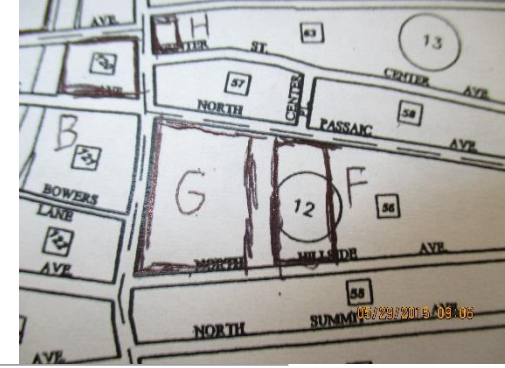
Monument: Gulf War, Operation Iraqi Freedom, Operation Enduring Freedom, and Vincent M. Sullivan Monument Stone



Site Code G: Library; Memorial Park



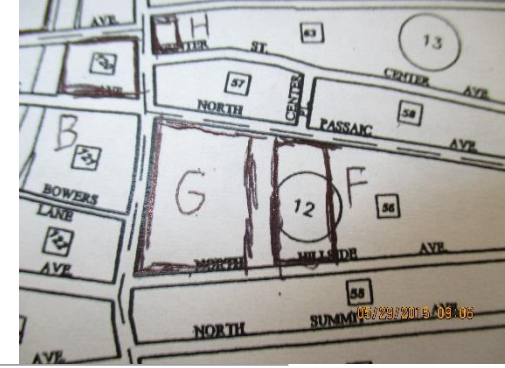
Monument: World War II Monument Stone



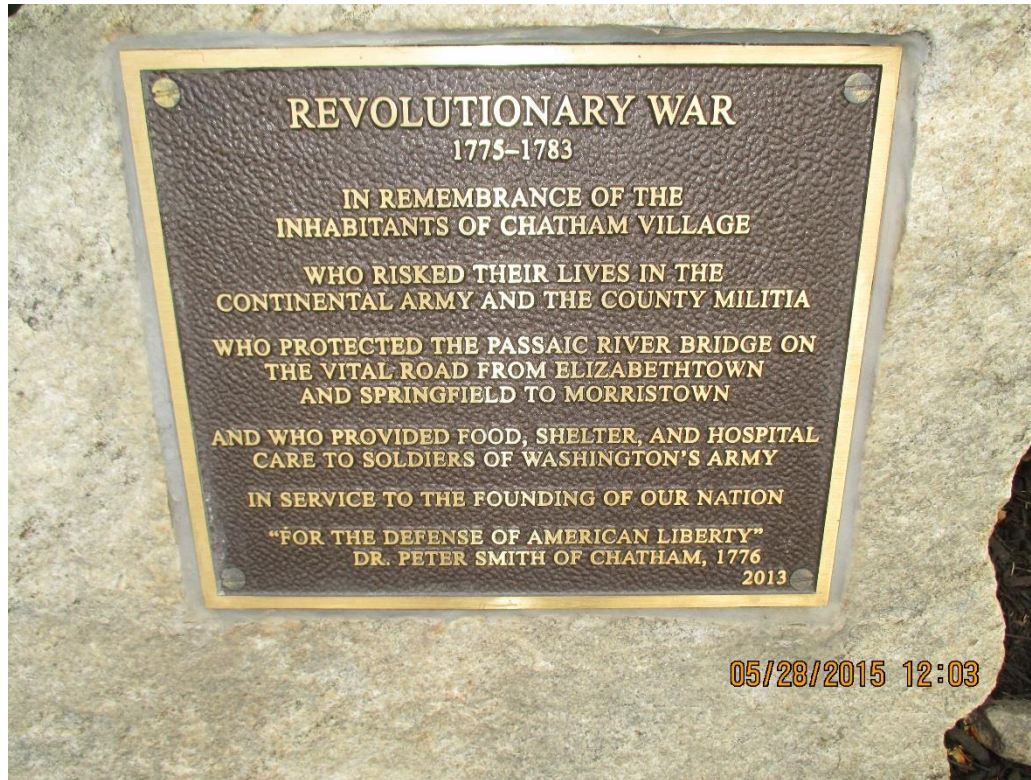
Site Code G: Library; Memorial Park



Monument: Revolutionary War Monument Stone; 2013

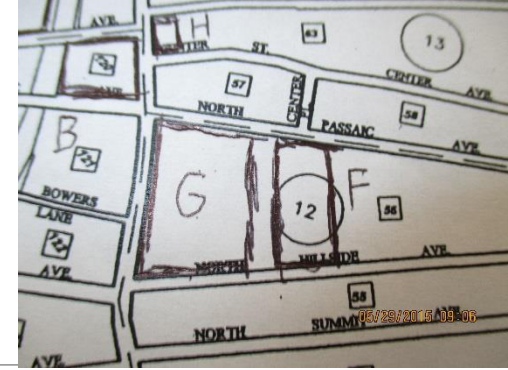


Site Code G: Library; Memorial Park



Monument: Vietnam War Monument Stone

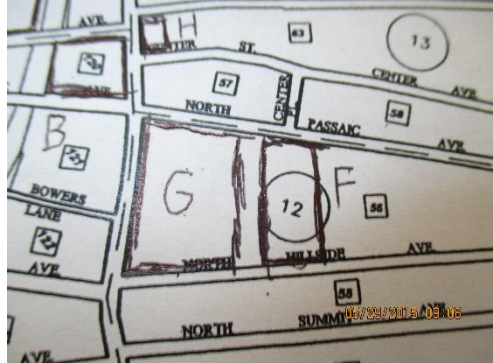
Dedicated to: Stephen James Hadley, Guy F. Johnson, Robert B. Gilray Jr., Manuel L. Font



Site Code G: Library; Memorial Park



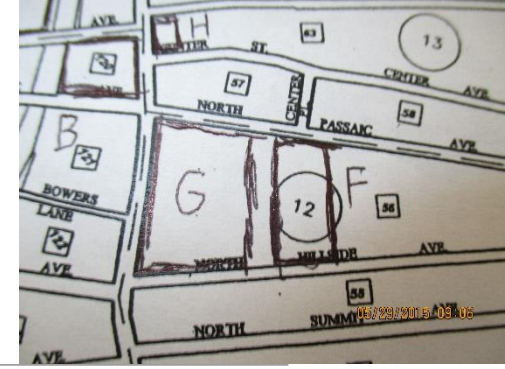
Monument: Civil War Monument Stone; 2013



Site Code G: Library; Memorial Park



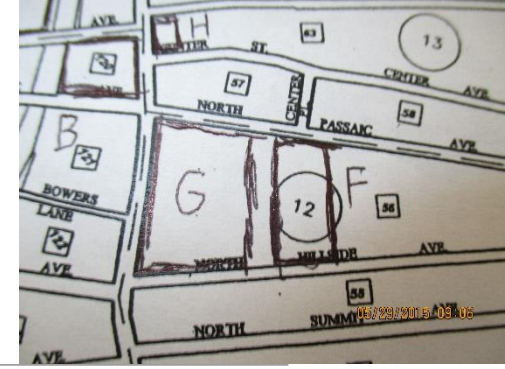
Monument: World War I Monument Stone; 1941



Site Code G: Library; Memorial Park



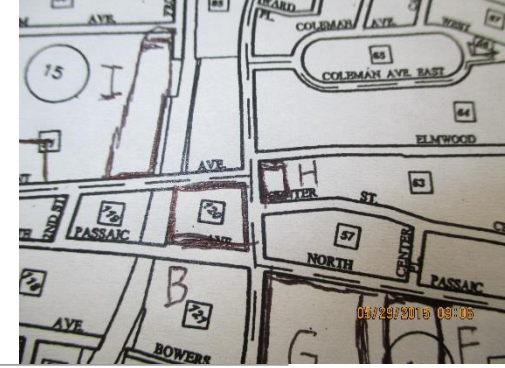
Monument: Korean War Monument Stone



Site Code G: Library; Memorial Park



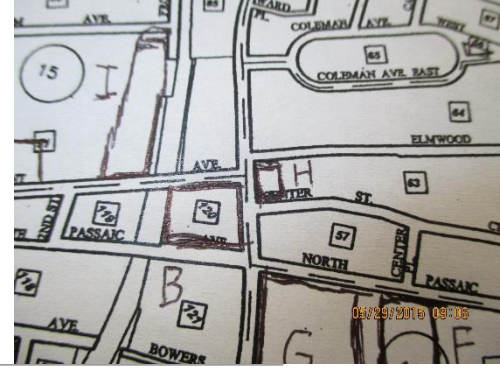
Monument: Bicentennial Park; 1975



Site Code H: Bicentennial Park



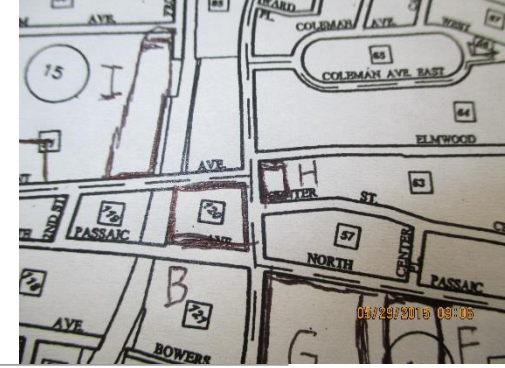
Memorial: Rotarian Mitch Caporaso Flag Pole Pole (Fair Condition)



Site Code H: Bicentennial Park



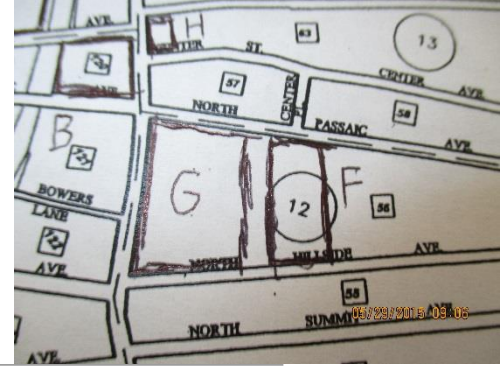
Memorial: Mo Tarleton Jr. Memorial Bench



Site Code H: Bicentennial Park



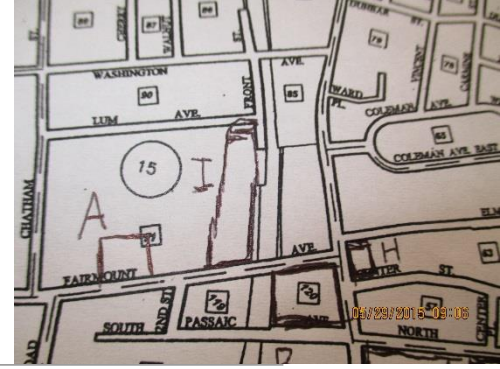
Monument: R. Wayne Stickel and Anita M. Stickel Monument Ramp; 1982



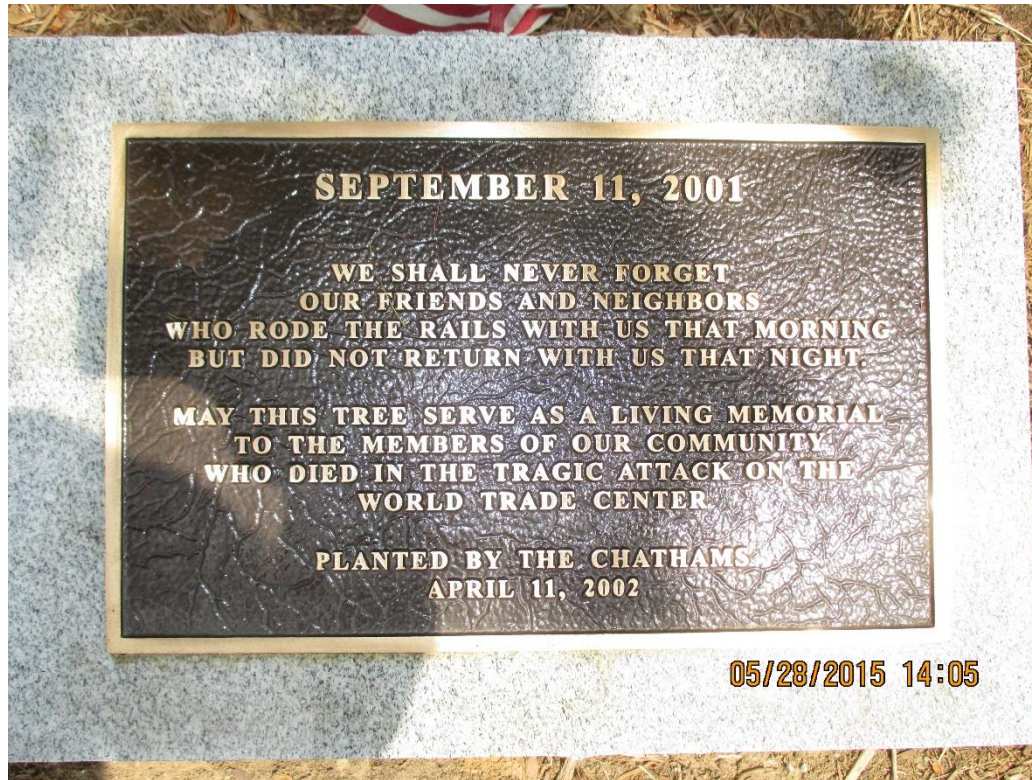
Site Code G: Library and Memorial Park



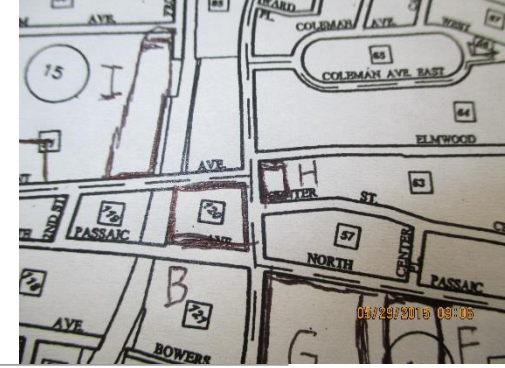
Memorial: September 11, 2001 Plaque; April 11, 2002



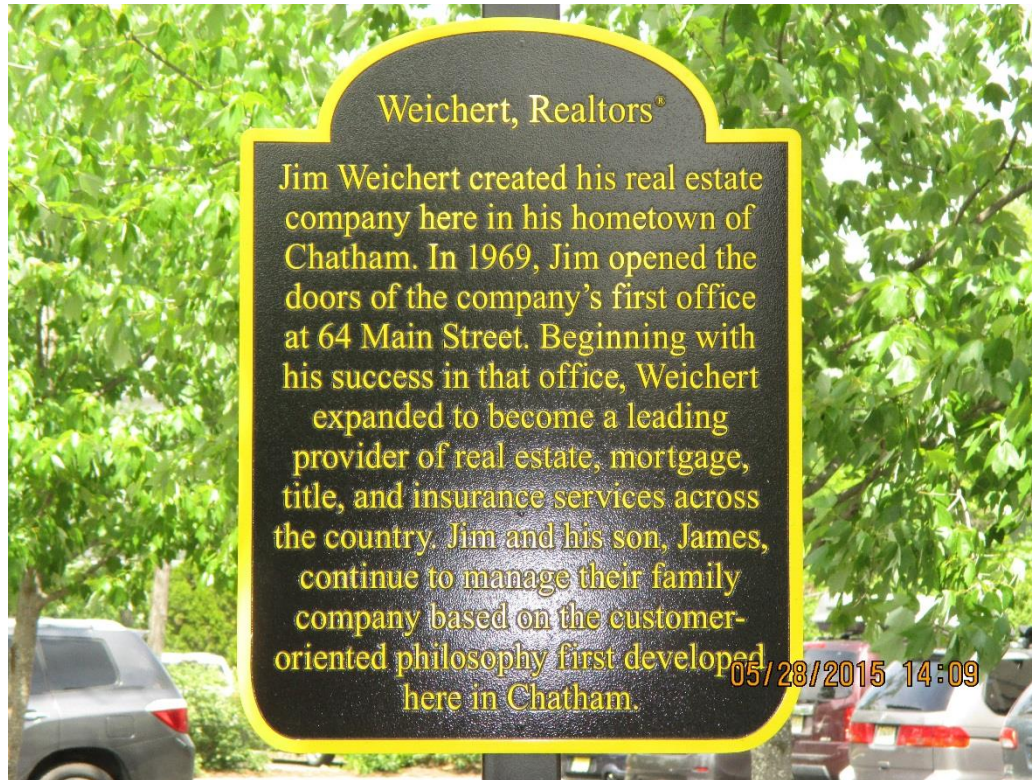
Site Code I: Rail Road Plaza South



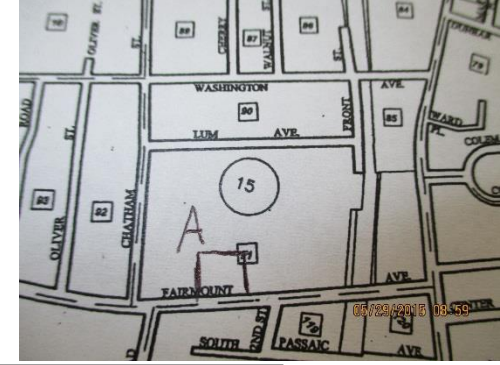
Memorial: Weichert, Realtors Historical Marker



Site Code H: Bicentennial Park



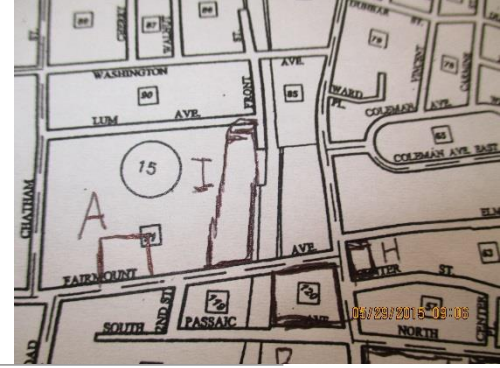
Memorial: Five Oak Trees and Plaque In Memory of Chatham Men Who Lost Their Lives In World War I



Site Code A: Borough Hall



Monument: Commuter's Oasis – Adopt-a-Space, Simonfay Landscaping



Site Code I: Rail Road Plaza South



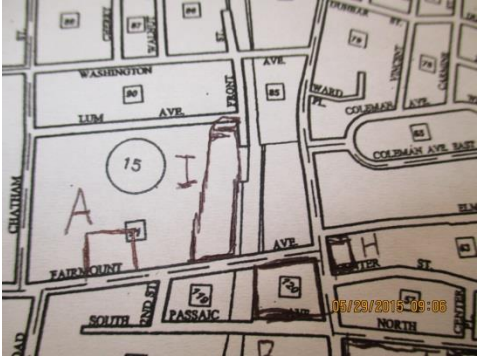
Memorial: Brian M. Bernstein Memorial Bench



Site Code H: Bicentennial Park



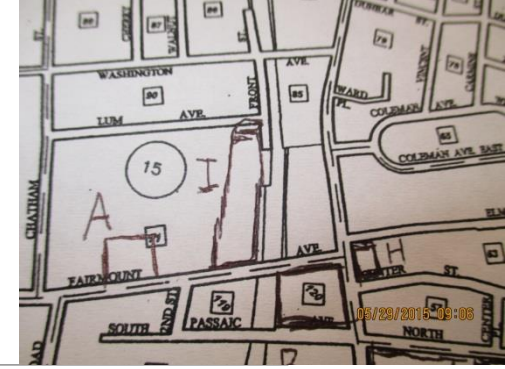
Monument: The Diversity Garden of the Chathams



Site Code I: Rail Road Plaza South



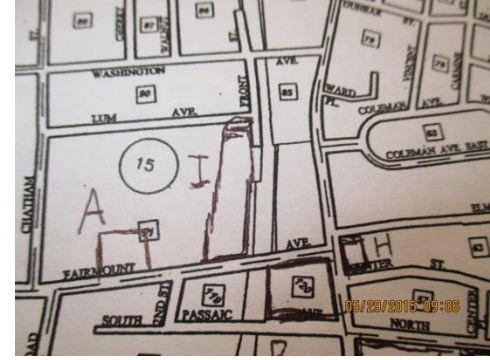
Public Art: Jolly (Statue)



Site Code I: Rail Road Plaza South

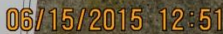
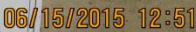


Public Arts: Murals in Fairmount Avenue Underpass



Site Code I: Rail Road Plaza South





Memorial: Charles D. Dziedzic, CPWM Memorial Stone



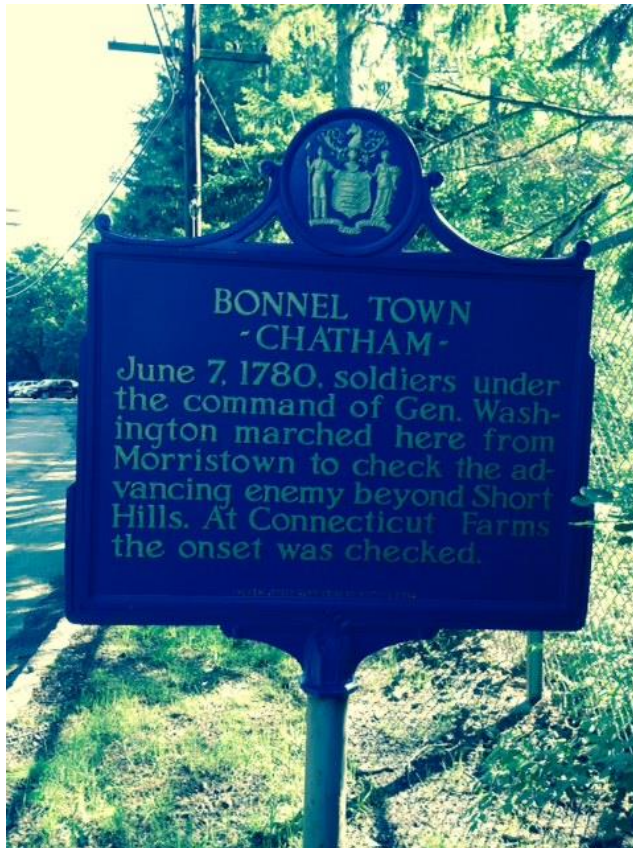
Site Code J: Department of Public Works



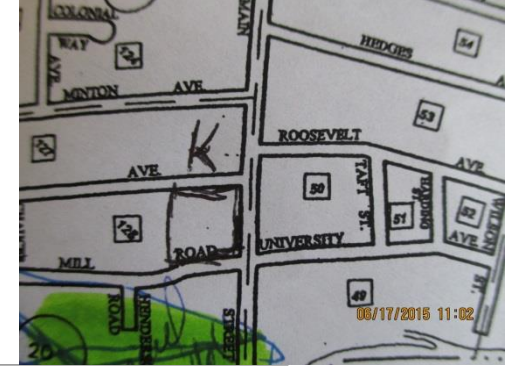
Historical Marker: Bonnel Town



Site Code J: Department of Public Works



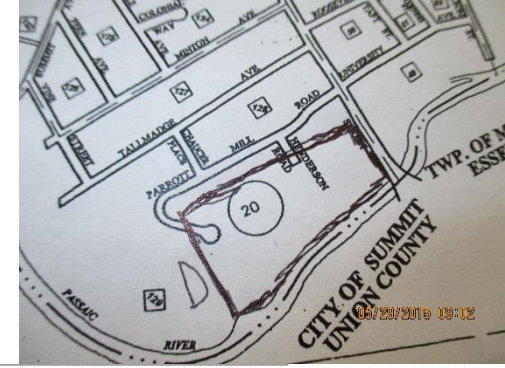
Historical Marker: New Jersey Journal



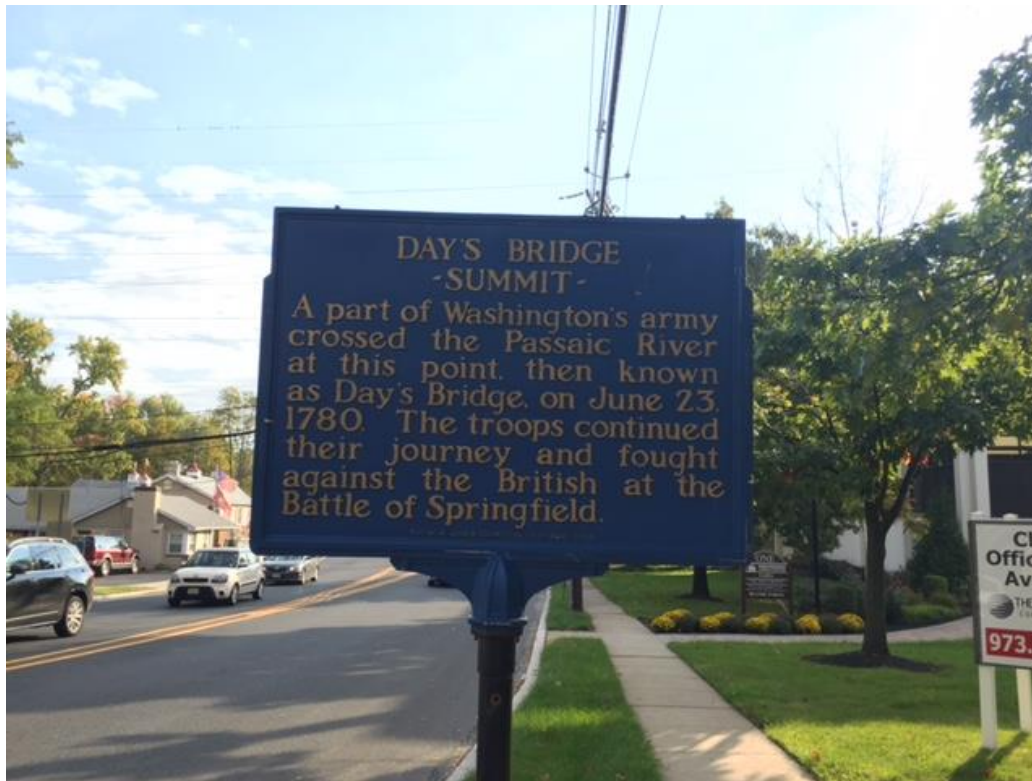
Site Code K: Block 128



Historical Marker: Day's Bridge



Site Code D: Shepard Kollock/One Main



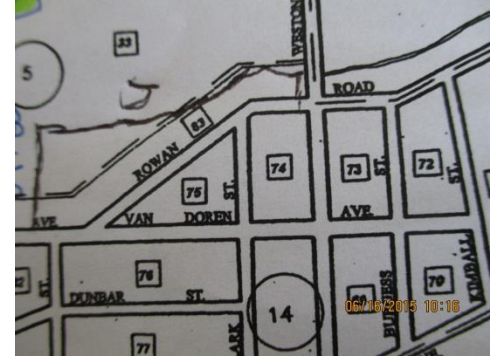
Chatham Historical Marker



Site Code N: Block 29/Madison Border



Memorial Plaque: American Legion Post No. 92



Site Code J: Department of Public Works



*Maker is in the Department of Public Works storage. I recommend a strong effort to swiftly remove this marker and put it back up due to it's decaying state at the Department of Public Works.

Memorial Plaque: George Washington's Birth



Site Code J: Department of Public Works



*Maker is in the Department of Public Works storage. I recommend a strong effort to swiftly remove this marker and put it back up due to it's decaying state at the Department of Public Works.

Historical Marker: Chatham Historic District



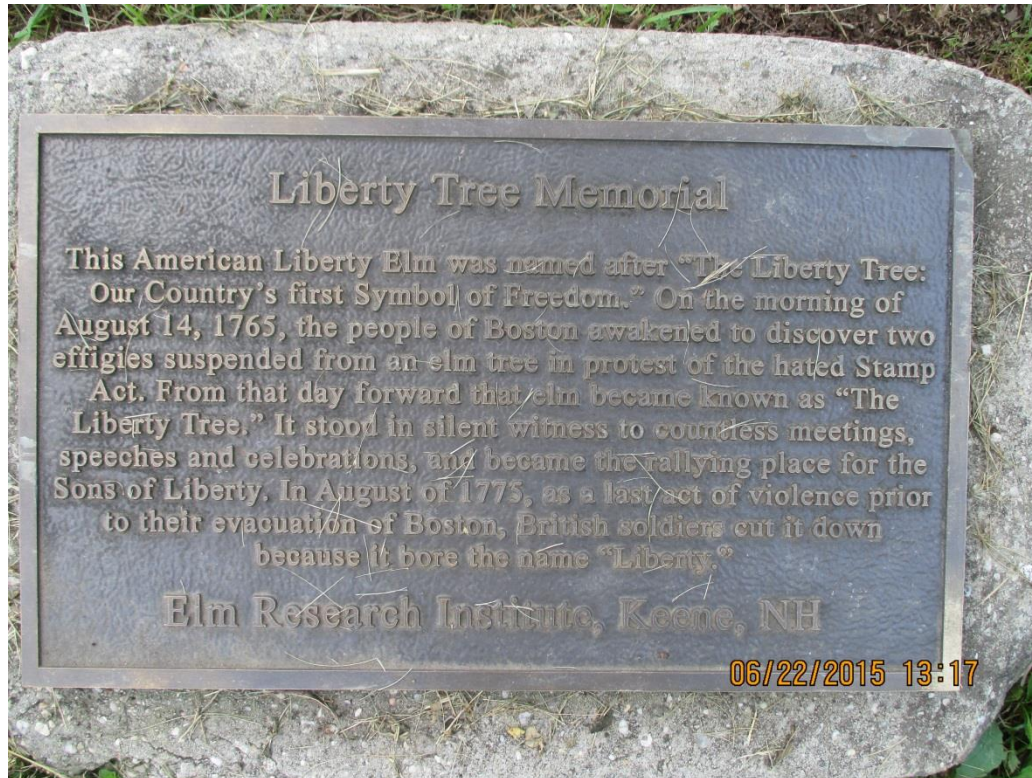
Site Code H: Bicentennial Park



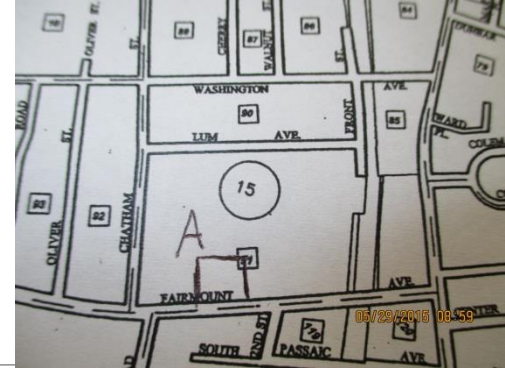
Memorial Plaque: Liberty Tree Memorial



Site Code J: Department of Public Works



Memorial: Corey Fuller Memorial Tree



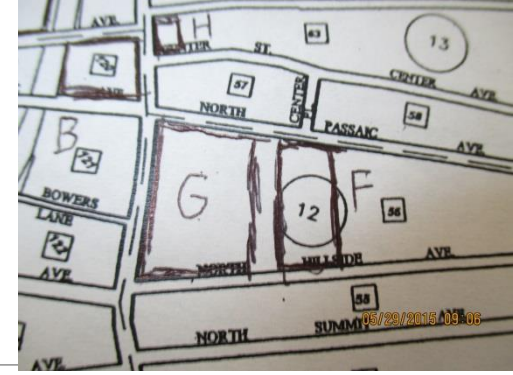
Site Code A: Borough Hall



- Tree dedicated to Corey Fuller, Councilwoman who served the Borough of Chatham and died due to Bladder Cancer after her term as councilwoman. There is no Plaque.

Memorial Plaque: Evan Hanes Pelletier

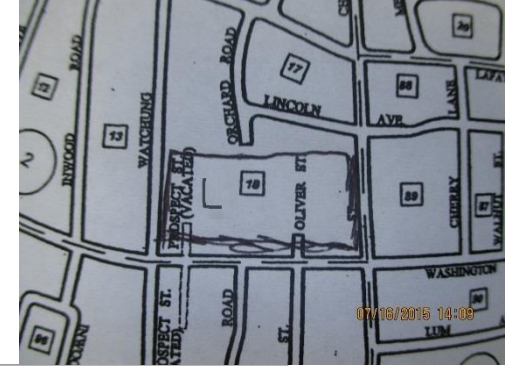
Memorial Tree and Plaque



Site Code F: Memorial Park



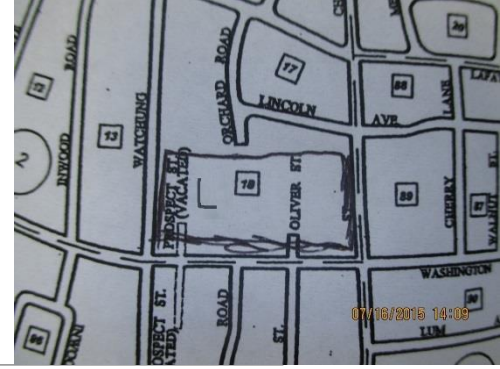
Memorial: Glenn Wyse Memorial Tree and Plaque



Site Code L: Washington Avenue School



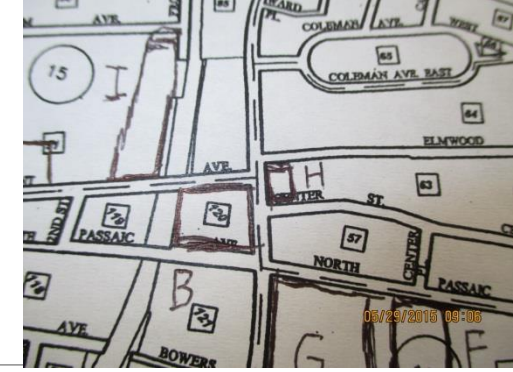
Memorial: Dr. and Mrs. Kuhn Memorial Tree and Plaque



Site Code L: Washington Avenue School



Memorial - Jim and Betty Tunny Memorial Bench



Site Code H: Bicentennial Park

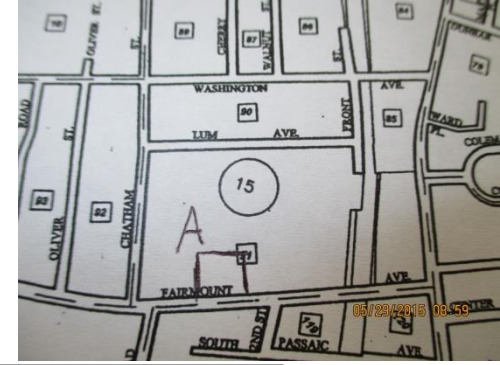


Memorial Walk Bricks

Memorial Walk around the library currently contains bricks on the sides of the path donated by various citizens. Each brick has names of the people who have donated it printed on the brick. Most of the bricks are still in good condition, but some of them require some small attention. In total, there is 1,088 bricks that cover this walk. See attached Master list in Appendix B for the breakdown.



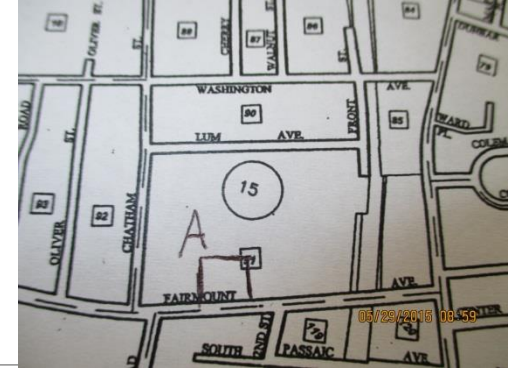
Memorial: Lin R. Denecke Memorial Tree and Plaque



Site Code A: Borough Hall
(Outside Fish and Game)



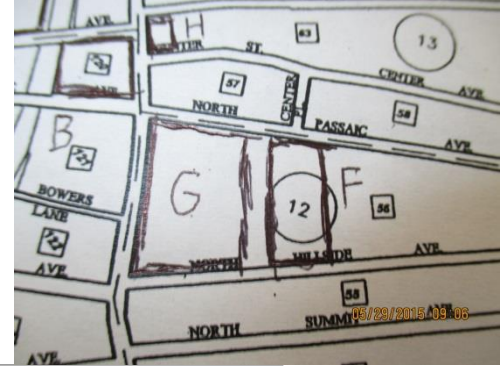
Monument: Lum Turf Field



Site Code A: Borough Hall (Lum Field)



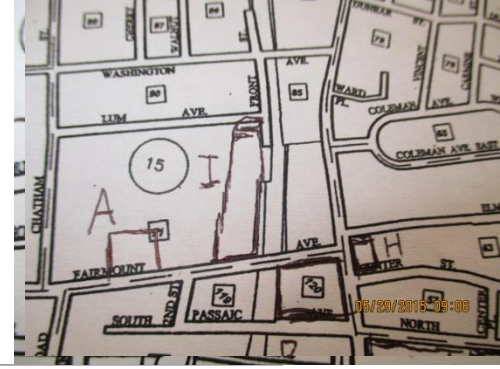
Memorial: Donna Cali-Charles Memorial Plaque



Site Code F: Memorial Park



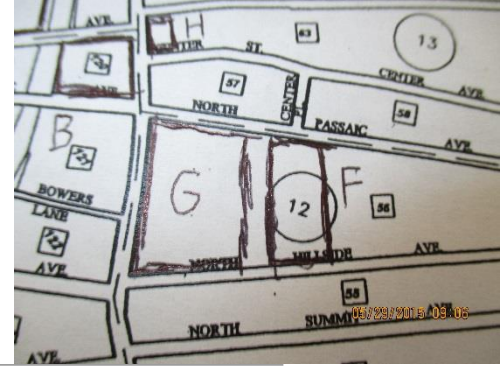
Memorial: John E. Ball Memorial Bench



Site Code I: Rail Road Plaza South



Memorial: Therese Hough Memorial Bench



Site Code G: Library; Memorial Park



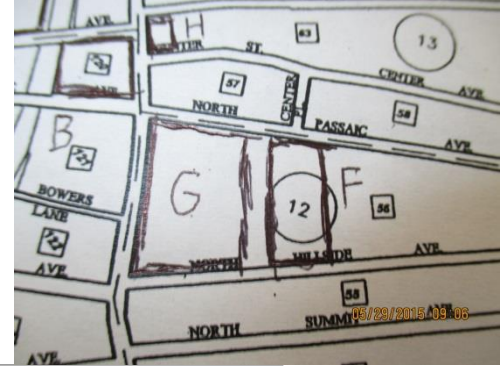
Memorial: Dr. Albert Ritter and Janis Joseph Memorial Bench



Site Code M: Block 122/Hillside & Main



Memorial: Caroline Fitt Memorial Tree and Plaque



Site Code F: Memorial Park

