

**IMPORTANT NOTICE - WIPES & PERSONAL  
HYGIENE PRODUCTS CLOG SEWER LINES!**

**WHAT WE ALL CAN DO TO HELP...*THROW NO WIPES DOWN OUR PIPES***

TRASH IT. DON'T FLUSH IT!





## **What should go down the toilet?**

When you flush your toilet, its contents travel through a maze of pipes and pumps before reaching the Madison Chatham Joint Meeting, our sewage treatment plant, in Chatham Borough. Along the way, there are areas in which objects, which should not be flushed, can cause blockages, and result in back-ups.

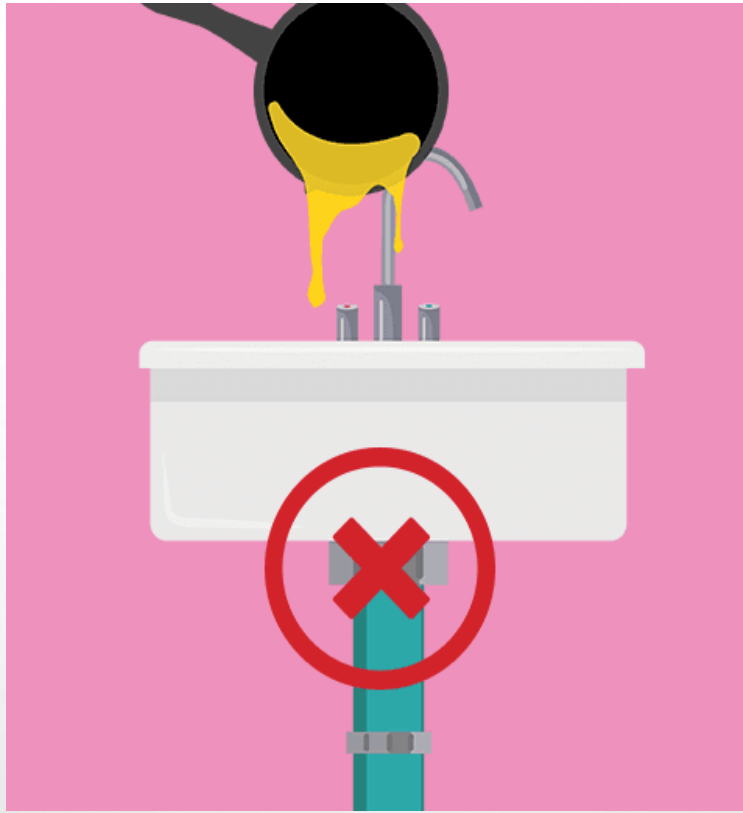


## **THE FOUR P'S**

**FLUSH 'EM! POOP, PEE, PUKE, AND TOILET PAPER ARE THE ONLY THINGS TO FLUSH DOWN THE TOILET.**



**WET WIPES**  
**TRASH 'EM, EVEN IF THEY SAY THEY'RE "FLUSHABLE."**



### Cooking Grease

**TRASH** it. Let it cool, then put it in a sealed container and throw it away.

**Questions?  
Call the  
Department of  
Public Works  
973-635-5242**

# No Wipes Down the Pipes

Even if a product says it is “flushable” ...

Unless it is toilet paper, it should not be flushed!

- Diapers (including cloth, cotton, disposable, or plastic)
- Flushable, disposable, cleaning, or baby wipes
- Paper towels, cloth towels, or any type of rag
- Feminine hygiene products
- Facial Tissues



Place the items listed above in a trash can

Putting these items down toilets may plug sewers and  
cause raw sewage to back up into YOUR HOME